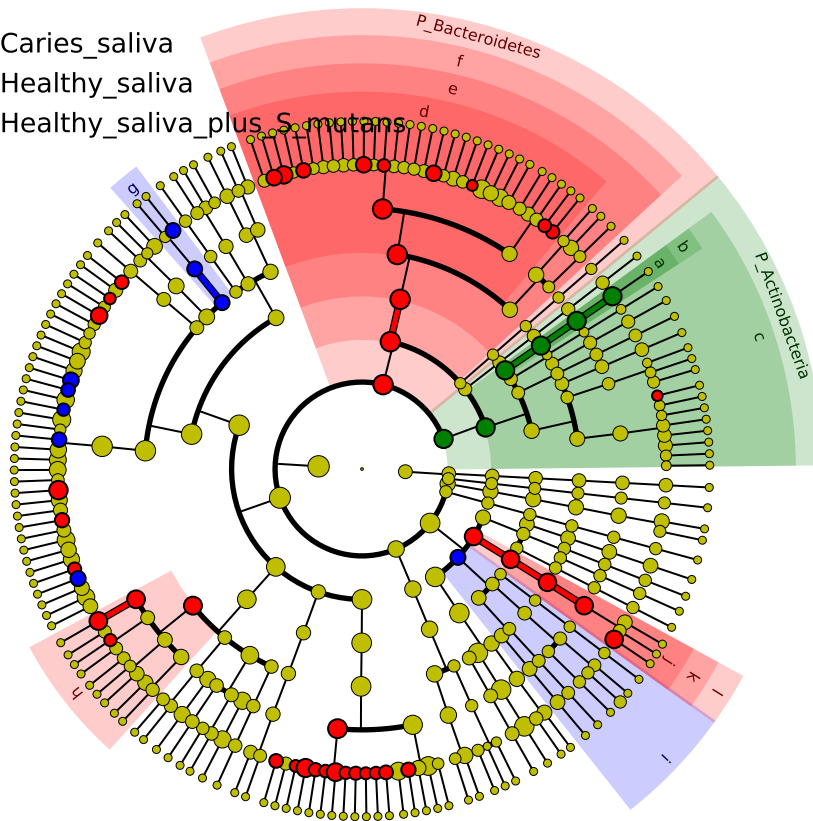


# Significantly Represented Taxa

Carries\_saliva

Healthy\_saliva

Healthy\_saliva\_plus\_S\_mutans



a: F\_Propionibacteriaceae

b: O\_Propionibacteriales

c: C\_Actinobacteria

d: F\_Prevotellaceae

e: O\_Bacteroidales

f: C\_Bacteroidia

g: F\_Aerococcaceae

h: F\_Lachnospiraceae\_XIV

i: C\_Betaproteobacteria

j: F\_Campylobacteraceae

k: O\_Campylobacteriales

l: C\_Epsilonproteobacteria