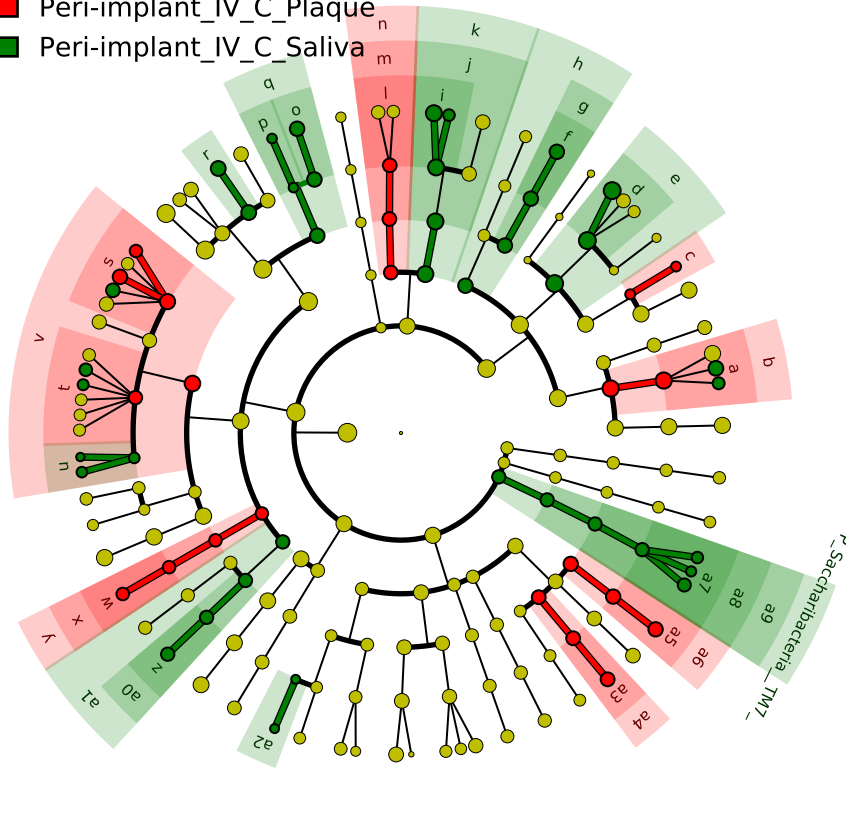


Significantly Represented Taxa

■ Peri-implant_IV_C_Plaque
■ Peri-implant_IV_C_Saliva



- a: F_Bifidobacteriaceae
- b: O_Bifidobacteriales
- c: F_Propionibacteriaceae
- d: F_Micrococcaceae
- e: O_Micrococcales
- f: F_Attopobiaceae
- g: O_Coriobacteriales
- h: C_Coriobacteriia
- i: F_Prevotellaceae
- j: O_Bacteroidales
- k: C_Bacteroidia
- l: F_Flavobacteriaceae
- m: O_Flavobacteriales
- n: C_Flavobacteriia
- o: F_Gemellaceae
- p: F_Staphylococcaceae
- q: O_Bacillales
- r: F_Carnobacteriaceae
- s: F_Lachnospiraceae_XIV
- t: F_Peptostreptococcaceae
- u: F_Ruminococcaceae
- v: O_Clostridiales
- w: F_Erysipelotrichaceae
- x: O_Erysipelotrichales
- y: C_Erysipelotrichia
- z: F_Veillonellaceae
- a0: O_Veillonellales
- a1: C_Negativicutes
- a2: F_Bradyrhizobiaceae
- a3: F_Moraxellaceae
- a4: O_Moraxellales
- a5: F_Moraxellaceae
- a6: O_Pseudomonadales
- a7: F_Saccharibacteria_TM7
- a8: O_Saccharibacteria_TM7
- a9: C_Saccharibacteria_TM7