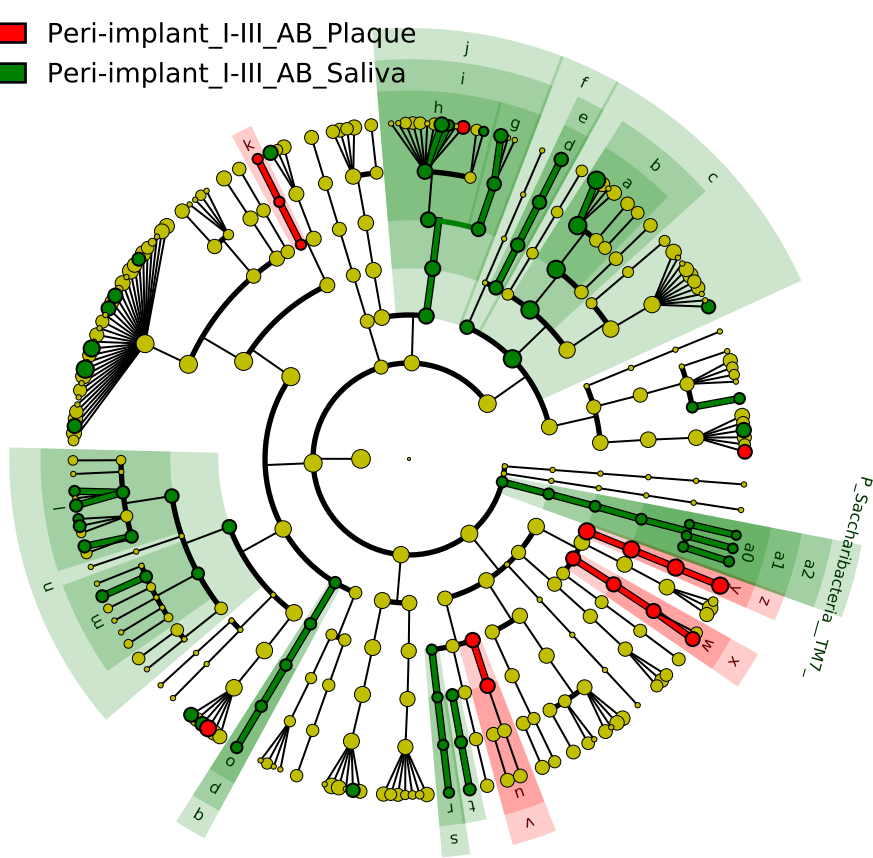


Significantly Represented Taxa

■ Peri-implant_I-III_AB_Plaque
■ Peri-implant_I-III_AB_Saliva



a: F_Micrococcaceae
 b: O_Micrococcales
 c: C_Actinomyetia
 d: F_Attopbiaceae
 e: O_Coriobacteriales
 f: C_Coriobacteria
 g: F_Porphyrmonadaceae
 h: F_Prevotellaceae
 i: O_Bacteroidales
 j: C_Bacteroidia
 k: F_Staphylococcaceae
 l: F_Lachnospiraceae_XIV
 m: F_Peptostreptococcaceae
 n: O_Clostridiales
 o: F_Erysipelotrichaceae
 p: O_Erysipelotrichales
 q: C_Erysipelotrichia
 r: F_Reyranellaceae
 s: O_Hyphomicrobiales
 t: F_Bradyrhizobiaceae
 u: F_Sphingomonadaceae
 v: O_Sphingomonadales
 w: F_Moraxellaceae
 x: O_Moraxellales
 y: F_Moraxellaceae
 z: O_Pseudomonadales
 a0: F_Saccharibacteria_TM7
 a1: O_Saccharibacteria_TM7
 a2: C_Saccharibacteria_TM7