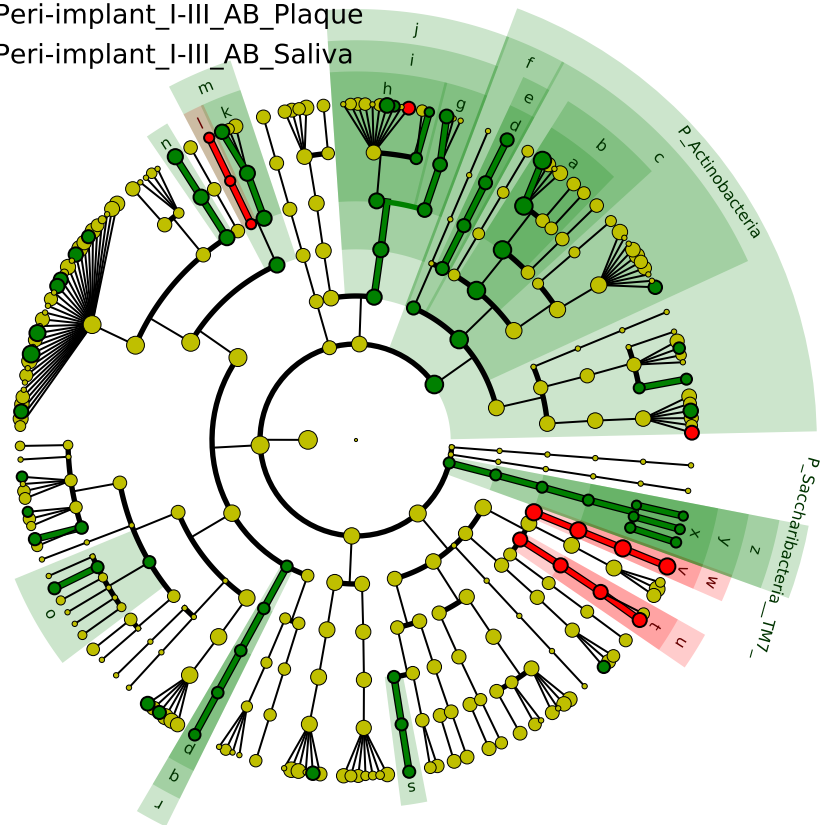


Significantly Represented Taxa

■ Peri-implant_I-III_AB_Plaque
■ Peri-implant_I-III_AB_Saliva



a: F_Micrococcaceae
 b: O_Micrococcales
 c: C_Actinomycetia
 d: F_Attopobiaceae
 e: O_Coriobacteriales
 f: C_Coriobacteria
 g: F_Porphyrinomonadaceae
 h: F_Prevotellaceae
 i: O_Bacteroidales
 j: C_Bacteroidia
 k: F_Gemellaceae
 l: F_Staphylococcaceae
 m: O_Bacillales
 n: F_Carnobacteriaceae
 o: F_Peptostreptococcaceae
 p: F_Erysipelotrichaceae
 q: O_Erysipelotrichales
 r: C_Erysipelotrichia
 s: F_Bradyrhizobiaceae
 t: F_Moraxellaceae
 u: O_Moraxellales
 v: F_Moraxellaceae
 w: O_Pseudomonadales
 x: F_Saccharibacteria_TM7
 y: O_Saccharibacteria_TM7
 z: C_Saccharibacteria_TM7