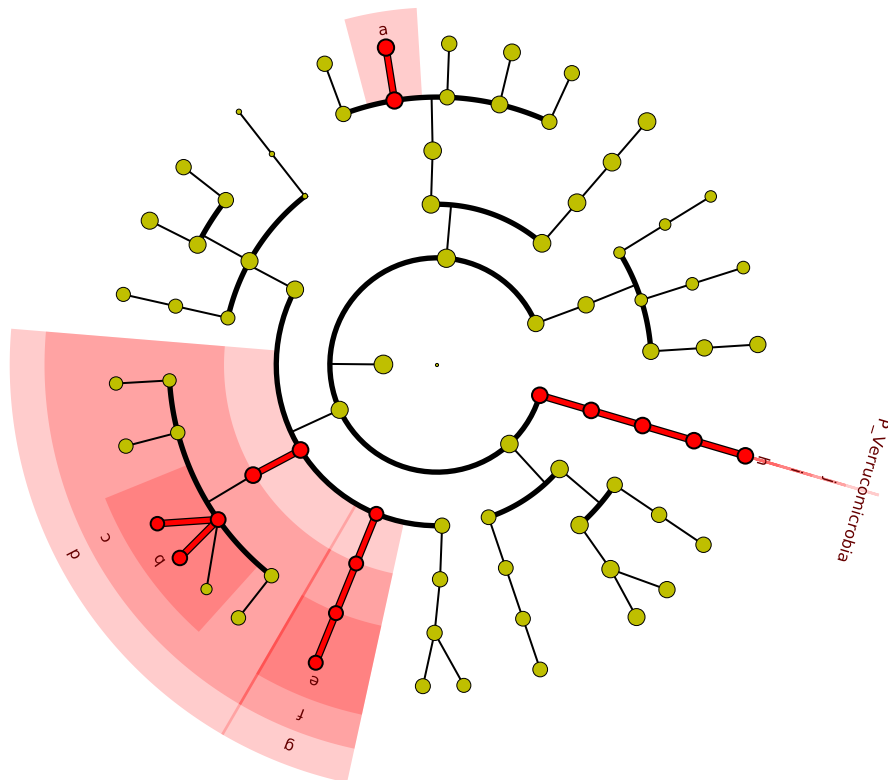


Significantly Represented Taxa

BL



- a: F_Rikenellaceae
- b: F_Ruminococcaceae
- c: O_Clostridiales
- d: C_Clostridia
- e: F_Erysipelotrichaceae
- f: O_Erysipelotrichales
- g: C_Erysipelotrichi
- h: F_Verrucomicrobiaceae
- i: O_Verrucomicrobiales
- j: C_Verrucomicrobiae