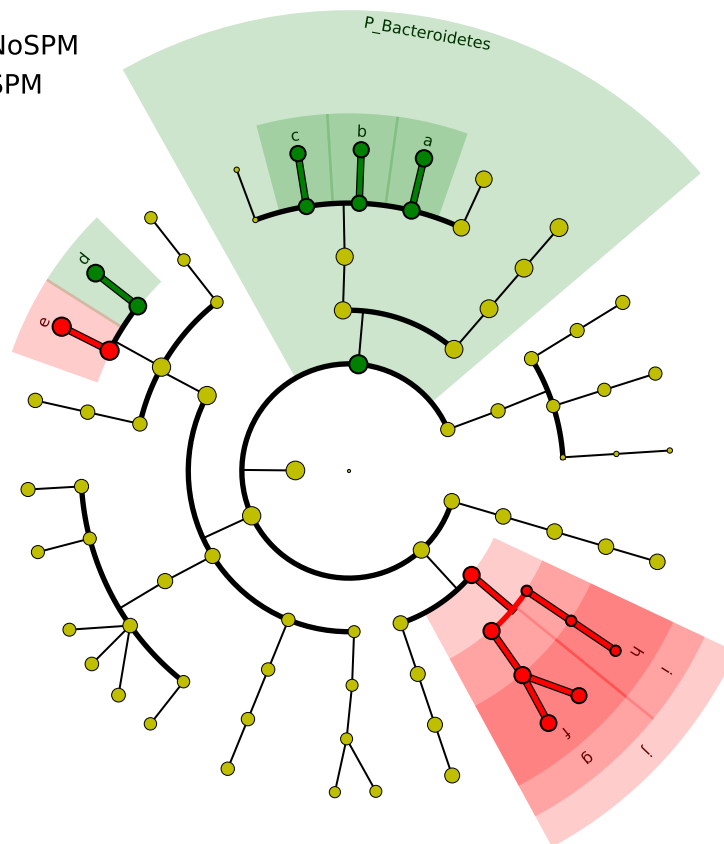


Significantly Represented Taxa

■ NoSPM
■ SPM



a: F_Barnesiellaceae
b: F_Porphyromonadaceae
c: F_Rikenellaceae
d: F_Lactobacillaceae
e: F_Streptococcaceae
f: F_Enterobacteriaceae
g: O_Enterobacteriales
h: F_Moraxellaceae
i: O_Pseudomonadales
j: C_Gammaproteobacteria