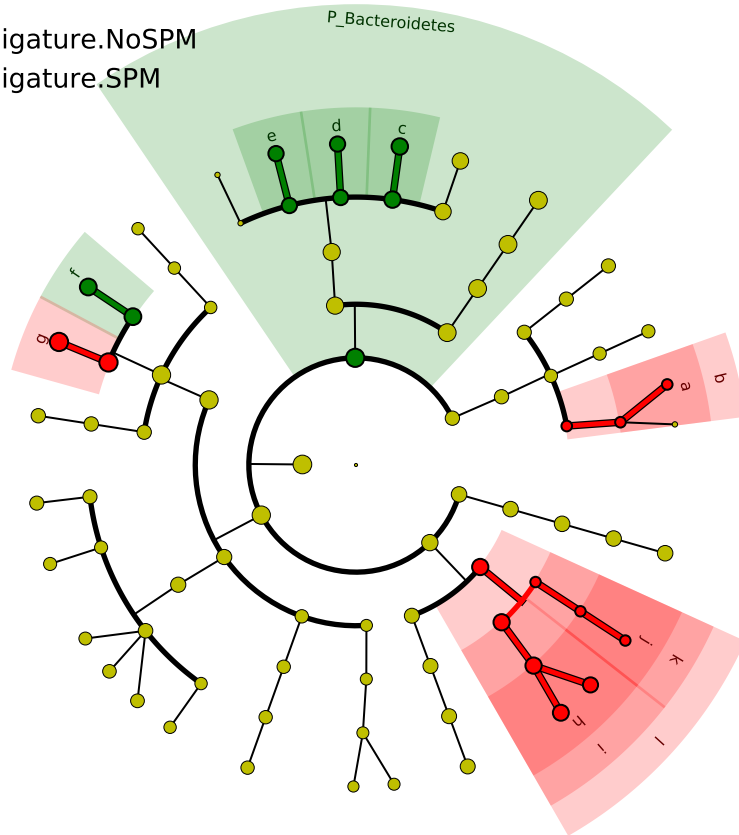


Significantly Represented Taxa

ligature.NoSPM

ligature.SPM



- a: F_Propionibacteriaceae
- b: O_Actinomycetales
- c: F_Barnesiellaceae
- d: F_Porphyromonadaceae
- e: F_Rikenellaceae
- f: F_Lactobacillaceae
- g: F_Streptococcaceae
- h: F_Enterobacteriaceae
- i: O_Enterobacteriales
- j: F_Moraxellaceae
- k: O_Pseudomonadales
- l: C_Gammaproteobacteria