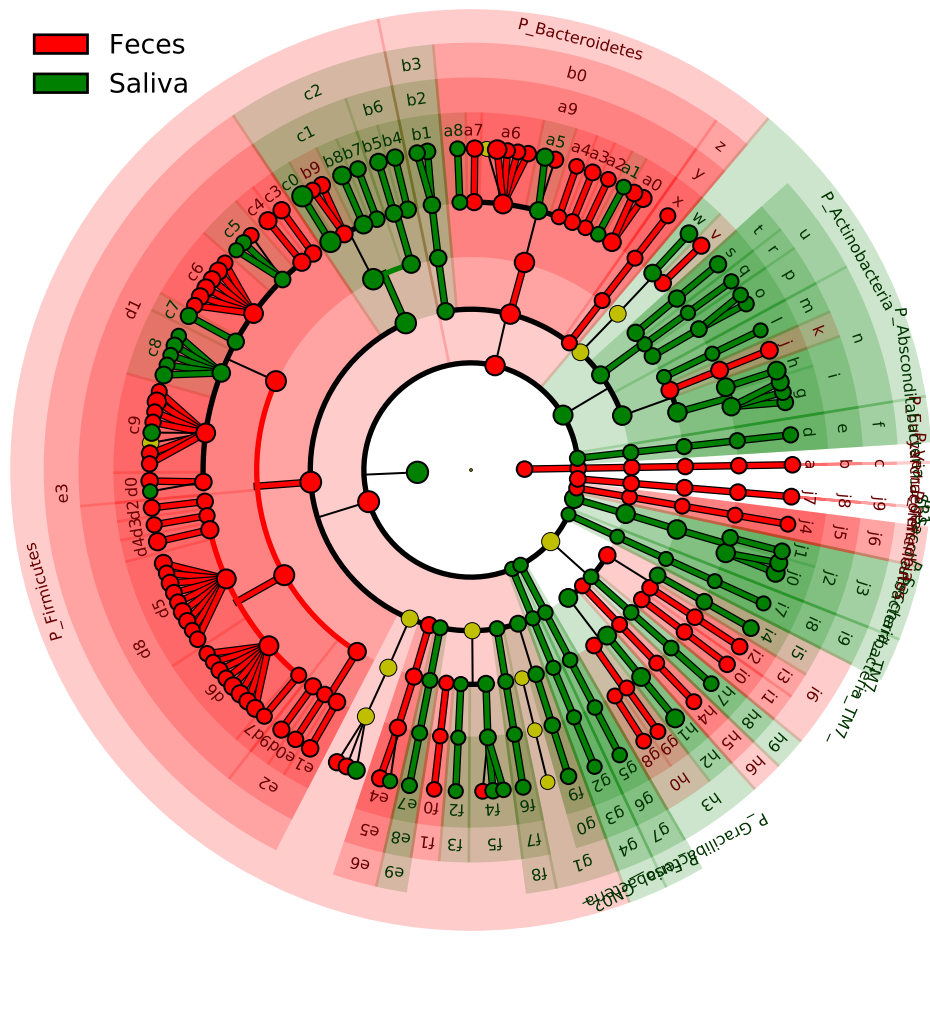


Significantly Represented Taxa

■ Feces
■ Saliva



- a: F_Methanobacteriaceae
- b: O_Methanobacteriales
- c: C_Methanobacteria
- d: F_Absconditabacteria
- e: O_Absconditabacteria
- f: C_Absconditabacteria
- g: F_Actinomycetaceae
- h: F_Micrococcaceae
- i: O_Actinomycetales
- j: F_Bifidobacteriaceae
- k: O_Bifidobacteriales
- l: F_Corynebacteriaceae
- m: O_Corynebacteriales
- n: C_Actinobacteria
- o: F_Actinomycetaceae
- p: O_Actinomycetales
- q: F_Corynebacteriaceae
- r: O_Corynebacteriales
- s: F_Micrococcaceae
- t: O_Micrococcales
- u: C_Actinomycetia
- v: F_Coriobacteriaceae
- w: F_multifamily
- x: F_Bacteroidaceae
- y: O_Bacteroidales
- z: C_Bacteroides
- a0: F_Bacteroidaceae
- a1: F_Bacteroidales_F_2
- a2: F_Barnesiellaceae
- a3: F_Muribaculaceae
- a4: F_Odoribacteraceae
- a5: F_Porphyrionadaceae
- a6: F_Prevotellaceae
- a7: F_Rikenellaceae
- a8: F_Tannerellaceae
- a9: O_Bacteroidales
- b0: C_Bacteroidia
- b1: F_Flavobacteriaceae
- b2: O_Flavobacteriales
- b3: C_Flavobacteriia
- b4: F_Gemellaceae
- b5: F_Staphylococcaceae
- b6: O_Bacillales