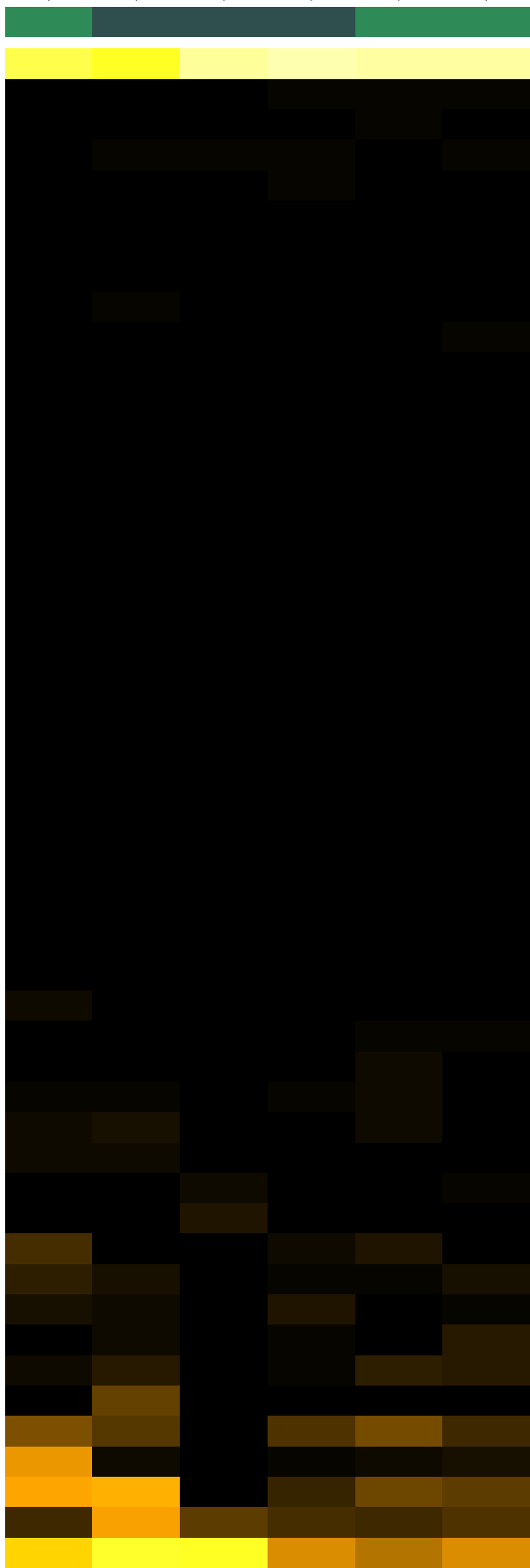
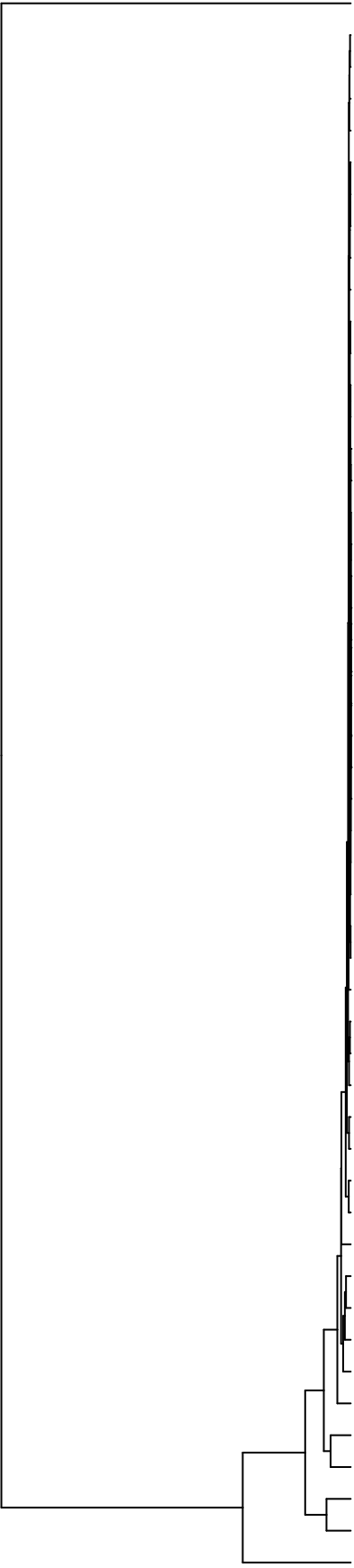


Group2
 Mother Saliva Preterm (B-)
 Mother Saliva On-term (B-)



Streptococcus
 Parvimonas
 Oribacterium
 Enterococcus
 Stomatobaculum
 Lautropia
 Leptotrichia
 Lachnoanaerobaculum
 Peptostreptococcaceae_[XI][G-6]
 Fusobacterium
 Corynebacterium
 Ruminococcaceae_[G-2]
 Saccharibacteria_(TM7)[G-6]
 Parvimonas_Peptostreptococcus
 Cutibacterium
 Finegoldia
 Peptoniphilus
 Stenotrophomonas
 Anaerococcus
 Collinsella
 Mediterraneibacter
 Serratia
 Bacteroides
 Clostridium
 Phocaeicola
 Paratractidigestivibacter
 Staphylococcus
 Absconditabacteria_(SR1)[G-1]
 Bifidobacterium
 Bergeyella
 Ruminococcaceae_[G-1]
 Peptostreptococcaceae_[XI][G-1]
 Peptostreptococcaceae_[XI][G-9]
 Saccharibacteria_(TM7)[G-3]
 Saccharibacteria_(TM7)[G-1]
 Veillonella
 Prevotella
 Neisseria
 Capnocytophaga
 Solobacterium
 Peptostreptococcus
 Porphyromonas
 Haemophilus
 Actinomyces
 Abiotrophia
 Gemella
 Atopobium_Lancefieldella
 Schaalia
 Granulicatella
 Rothia

F9928.S08
 F9928.S05
 F9928.S03
 F9928.S01
 F9928.S07
 F9928.S09

Samples

Genus